



## IVAP PROFILING

IVAP was established in 2010 to gather information on the humanitarian needs of DPs residing in Khyber Pakhtunkhwa (KP) province. IVAP conducts a multi-cluster assessment based on door-to-door family-level interviews. IVAP aims to guide humanitarian response that is targeted towards the needs of the most vulnerable.

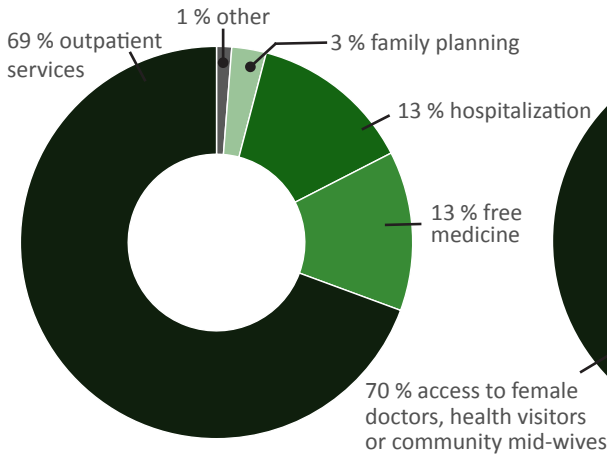
This IVAP Factsheet is based on the current IVAP database (with information collected or updated in 2013/14).

For more information and to access the IVAP live database go to [www.ivap.org.pk](http://www.ivap.org.pk)

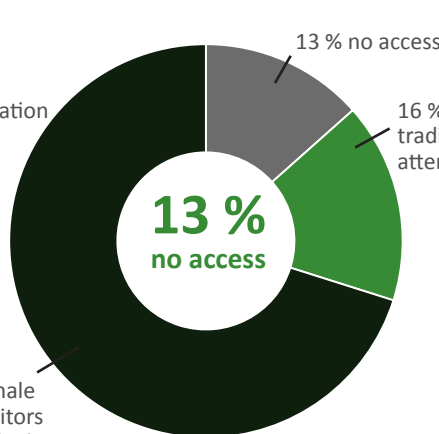
## KEY FIGURES



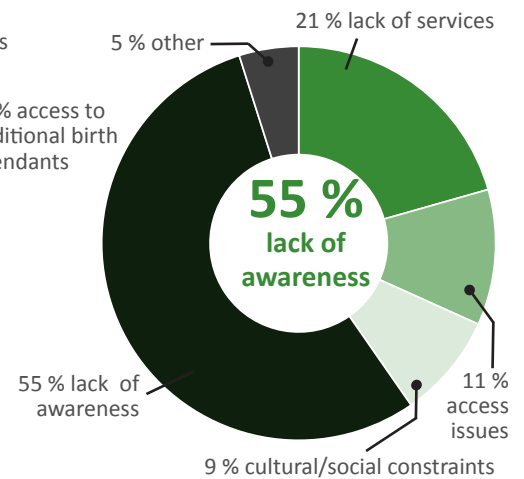
### Type of government health services accessed



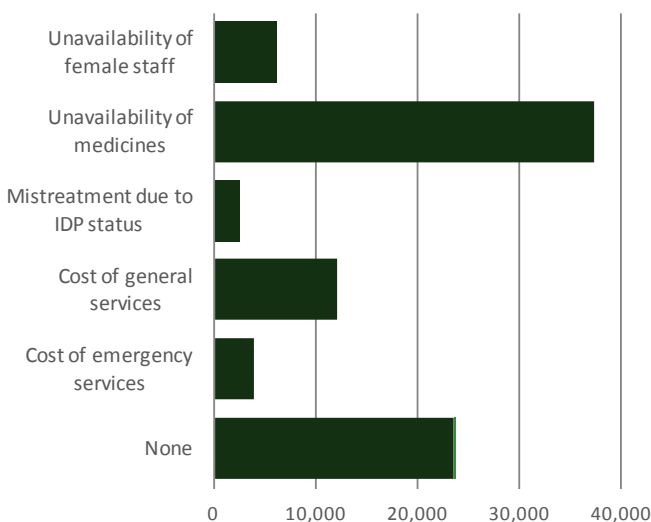
### Access to healthcare providers to assist with birth



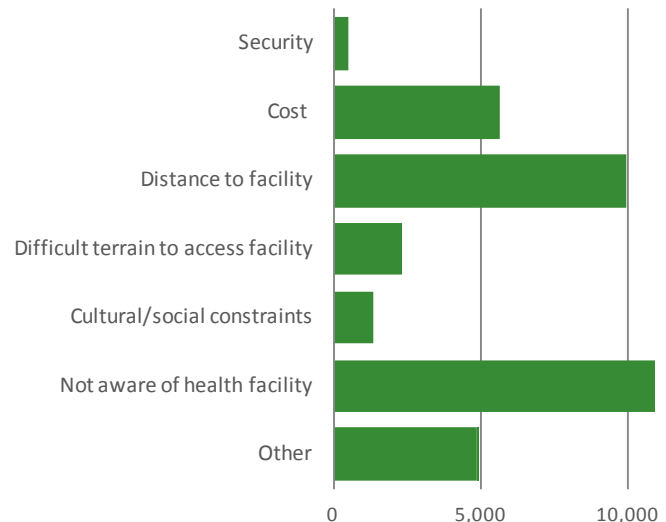
### Reasons for not being vaccinated



### Issues at government health facilities as identified by respondents



### Reasons for not accessing government health facility



Feedback: [stephanie.matti@rescue.org](mailto:stephanie.matti@rescue.org)  
[lema.khan@rescue.org](mailto:lema.khan@rescue.org)

IVAP is funded by  
ECHO and DFID

