



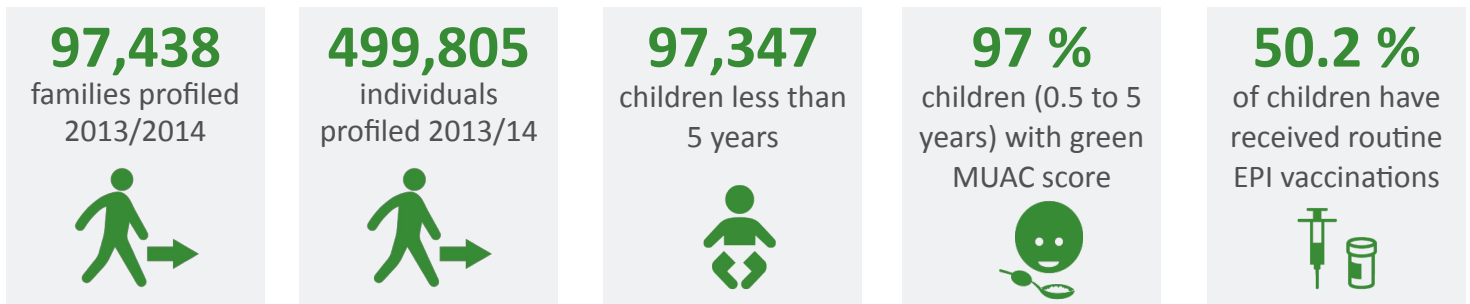
## IVAP PROFILING

IVAP was established in 2010 to gather information on the humanitarian needs of DPs residing in Khyber Pakhtunwan (KP) province. IVAP conducts a multi-cluster assessment based on door-to-door family-level interviews. IVAP aims to guide humanitarian response that is targeted towards the needs of the most vulnerable.

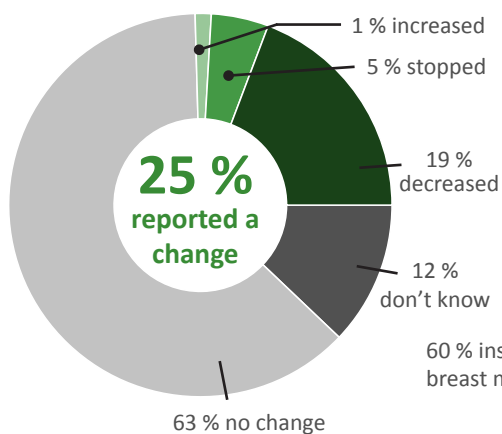
This IVAP Factsheet is based on the current IVAP database (with information collected or updated in 2013/14).

For more information and to access the IVAP live database go to [www.ivap.org.pk](http://www.ivap.org.pk)

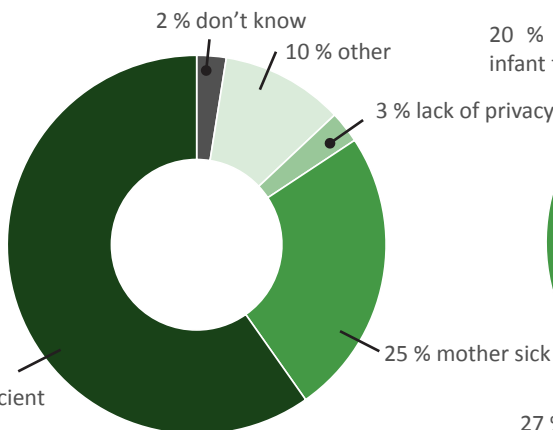
## KEY FIGURES



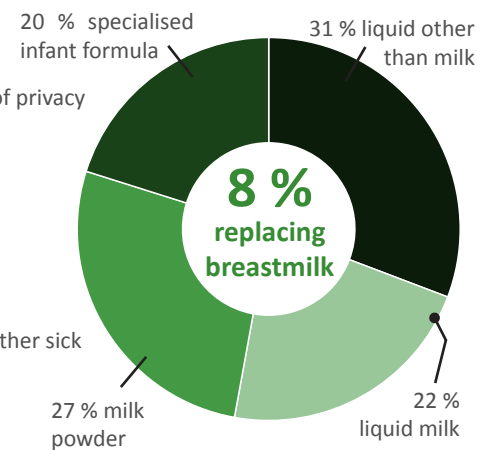
### Changes in breastfeeding patterns in displacement



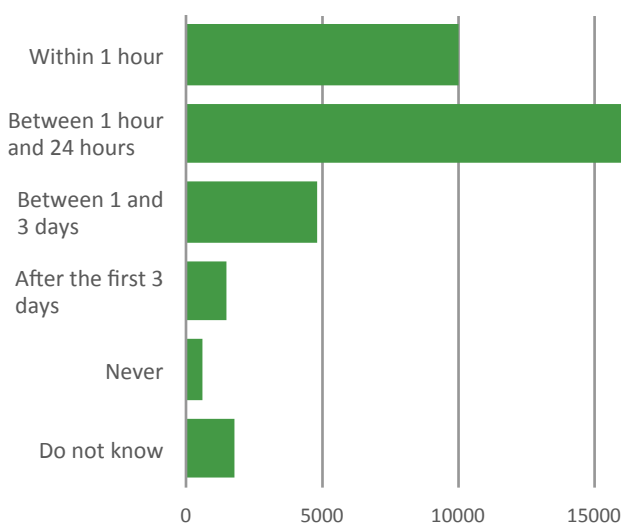
### Reason for change in breastfeeding



### Breast milk replacement



### Age of first child in family when first breastfed



### Age of first child when started feeding with food/fluids other than breast milk

